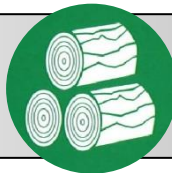


PELETT MILL



GENERAL DIES



animal feed



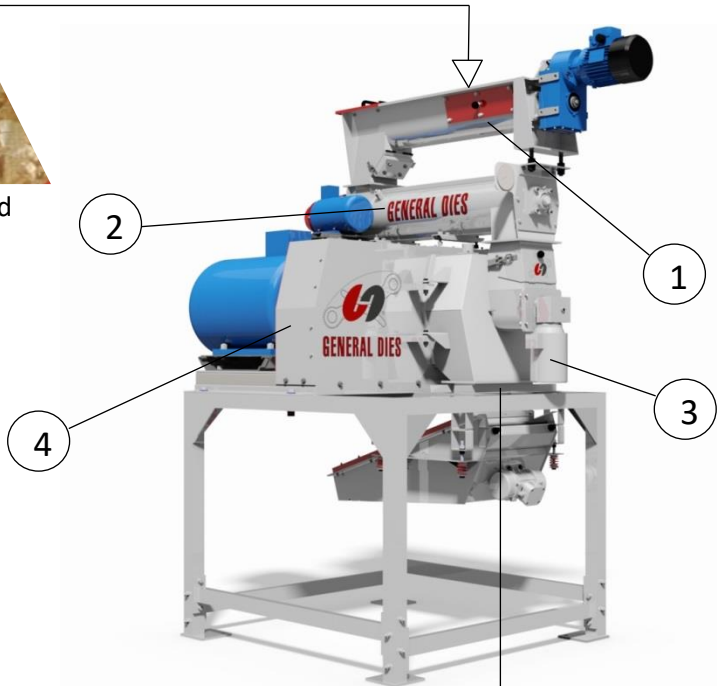
straw



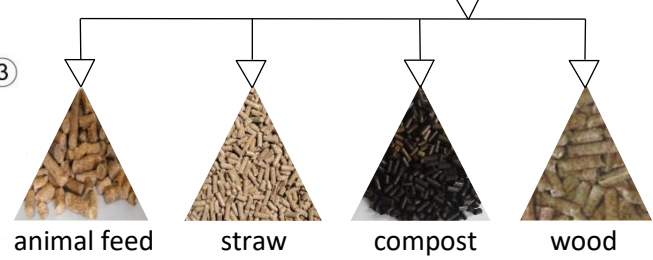
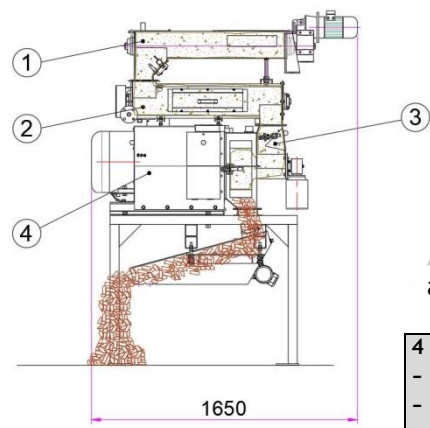
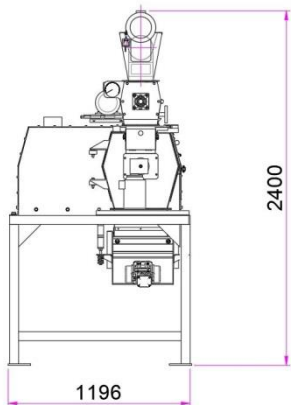
compost



wood



IOTA		
TECNICAL DATA	20	25
Installed power	11 – 15 kw	18,5 – 30 kw
Die diameter	200 mm	250 mm
Working band	50 mm	45-65 mm
Estimated weight	0,6 t	0,9 t



animal feed straw compost wood

MAIN COMPONENT AND BUILDING FEATURES

1 FEEDING SCREW

- Stainless steel carpentry
- Variable pitch spiral screw
- Gearmotor with adjustable speed variation by means of an inverter
- Magnetic plate positioned at the end of the feeder

2 CONDITIONER

- Body made of stainless steel; equipped with cleaning doors and inspection; bladed shaft with adjustable vanes too in stainless steel
- Predisposition for the injection of water and/or steam
- Thermometer for measuring the product temperature

3 FEEDING DUCT

- Body made of stainless steel with inspection door
- The duct can be "forced" or "gravity" with by-pass pneumatic chosen on the basis of the type of product to be pelleted

4 PELLET MILL

- Sturdy pressure group
- Wide access to the die
- Oversized bearings for a long life
- Winch for simple and safe replacement of die and rollers
- Automatic lubrication even during operation
- Stainless steel die
- "Securlock" for a safe installation of the die
- 2 pressure rollers equipped with a system for regulating adhesion of the rollers to the type of die
- Adjustable material deviator, made of stainless steel for one uniform distribution of the product on the die
- Adjustable pellet-shear knives even with the machine running
- Shockproof safety device to prevent damage caused by foreign bodies or incorrect maneuvers

STANDARD

- Maintenance tools

OPTIONAL

- Electric power and control panel with automation
- On request, the machine is supplied with construction specifications compliant with ATEX Ex II 3D regulations
- Possible changes on customers request

